

# GS2W<sup>EN</sup>

## X-Series



**CAMPETELLA**

Linear Robot GS2W X-Series evo

**125**  
*Years*

our history, our strength

 **Campetella,**  
the right way  
to save energy.

FOLLOW US:



**X**series  
EVO

# GS2W X-Series evo

## The ultra-fast top-entry robot with minimal footprint for stack-moulding applications

A top-entry premium class robot with double vertical axis designed for the most extreme performances: ultra-high-performance motors combined with materials used in the aerospace industry ensure record-breaking accelerations and speed, for operating cycle times of up to 3.0 seconds.

Carbon technology

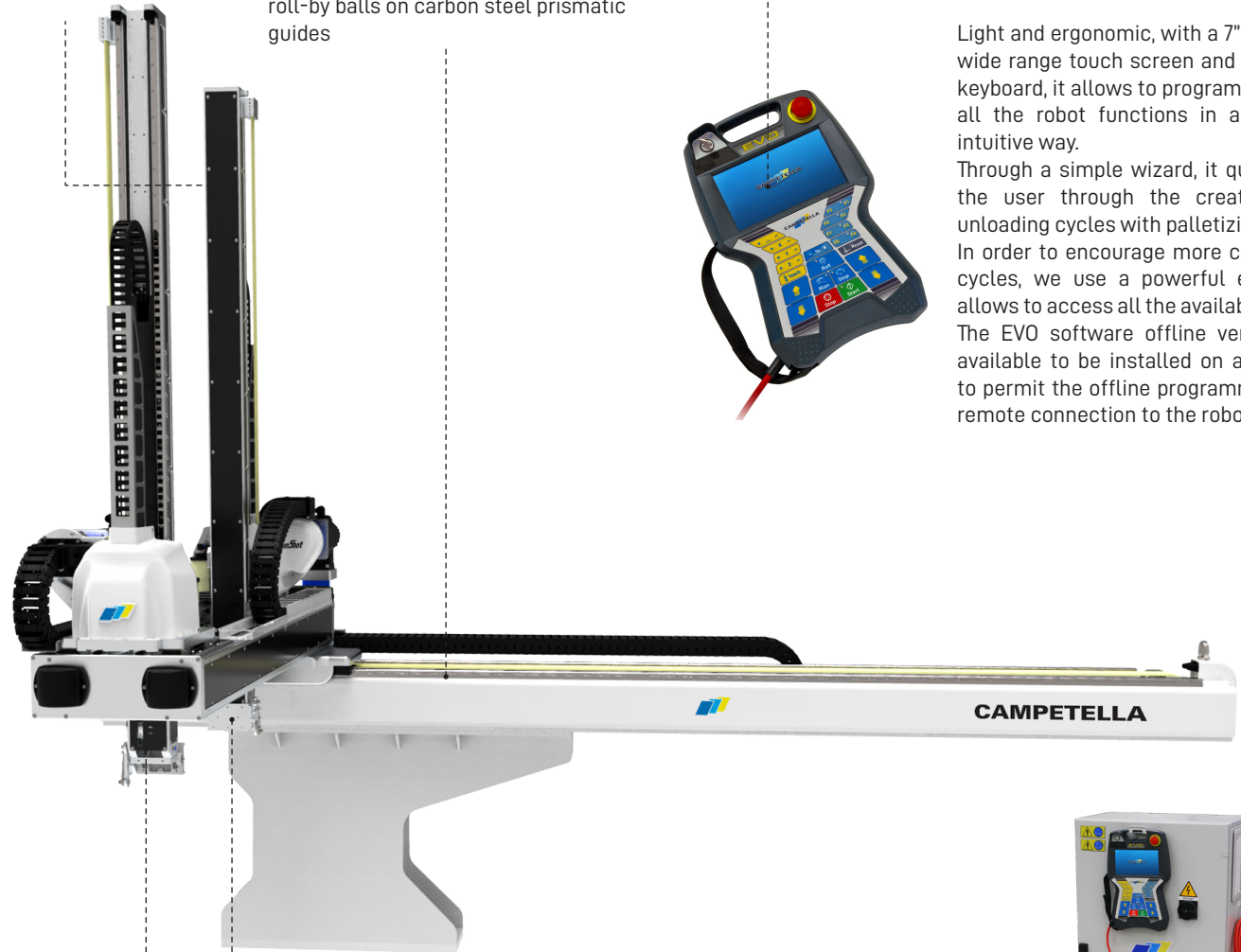
Self-lubricating sliding blocks with roll-by balls on carbon steel prismatic guides

Consolle EVO



Light and ergonomic, with a 7" TFT 800x480 wide range touch screen and a membrane keyboard, it allows to program and manage all the robot functions in a simple and intuitive way.

Through a simple wizard, it quickly guides the user through the creation of IMM unloading cycles with palletizing functions. In order to encourage more complex work cycles, we use a powerful editor, which allows to access all the available functions. The EVO software offline version is also available to be installed on a PC in order to permit the offline programming and the remote connection to the robot.



Pneumatic C-axis  
Maximum Payload 2,5 Kg(x2)

Electrical panel on the ground



Float  
Balanced Axis

Carbon  
Technology

Dynamic  
Vacuum

K.E.R.S.

H.S.I.

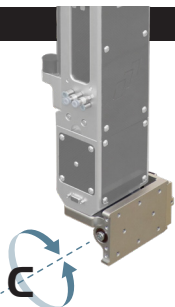
3DP  
Device

V.O.S.

Jog Over

### Pneumatic C Axis

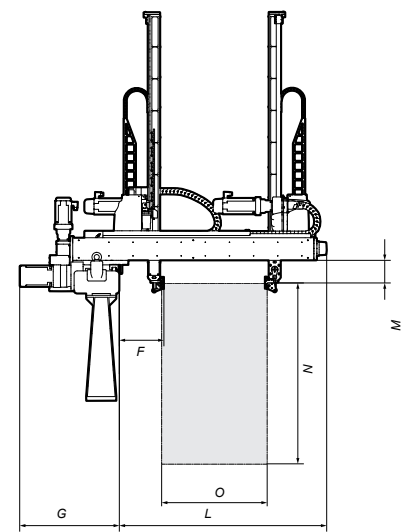
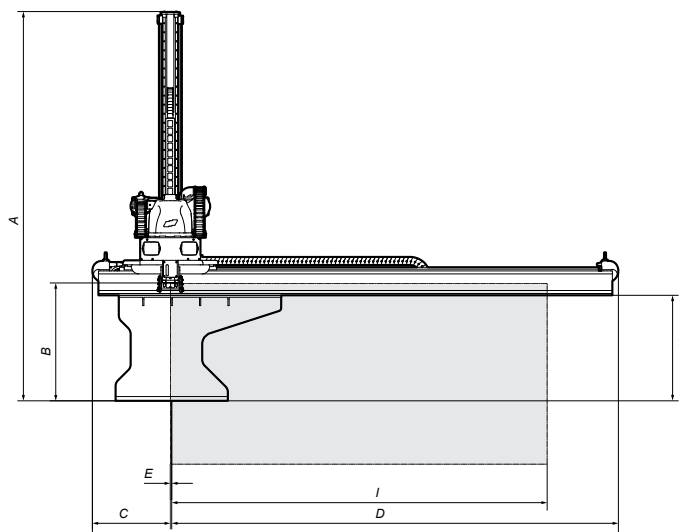
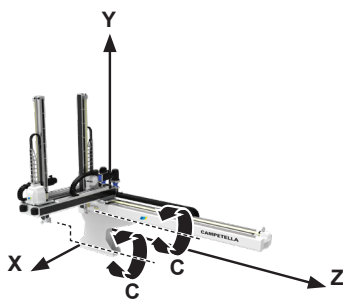
The C pneumatic axis facilitates the deposit in plan of the molded pieces picked up from the mold, choosing from the program between two positions (vertical/horizontal).



(sample image may differ from actual supply)

**Technical specifications:**

Maximum Payload [kg]:	2,5 (x2)	2,5 (x2)
Vertical axis:	Direct	Direct
Vertical axis pneumatic balancing:	-	-
Z-axis stroke - Horizontal [mm]:	2000	2500
X - axis stroke - Extraction [mm]:	600 (x2)	
Y-axis stroke - Vertical [mm]:	1200 (x2)	1200 (x2)
X, Y, Z axes motion:	AC synchronous brushless servo motors	
X,Y,Z axes guidance system:	Self-lubricating sliding blocks with roll-by balls on carbon steel prismatic guides	
Positioning repeatability [mm]:	± 0,1	
Pneumatic C axis rotation [deg]:	0°/90°	
Electrical C axis rotation [deg]:	-	
Pneumatic AB axis rotation [deg]:	-	
Electrical AB axis rotation [deg]:	-	
Electrical B axis rotation [deg]:	-	
Pneumatic C axis torque [Nm]:	2,5	
Pneumatic AB axis torque [Nm]:	-	
Electrical C axis torque [Nm]:	-	
Electrical AB axis torque [Nm]:	-	
Electrical B axis torque [Nm]:	-	
Control unit:	Campetella EVO proprietary system	
Minimum cycle time with maximum load [s]:	3	
Electrical power supply:	400-480 VAC • 50-60Hz • 3P+T	
Installed electrical power [kVA]:	17,54	
Pneumatic power supply [bar]:	6	
Approximate weight [kg]:	350	



Model	A	B	C	D	E	F	G	H	I	L	M	N	O
GS2W-1B	2583	782	517	2964	9	296	661	*	2000	1376	150	1200	699
GS2W-2B	2583	782	517	2964	9	296	661	*	2500	1376	150	1200	699

The drawings refer to a robot with a pneumatic C-axis and support H = 600mm

\*Available standard supports H = 300-400-500-600mm The dimensions A, B and I vary by difference according to the chosen support

	GS2W-1B	GS2W-2B
<b>Wrist</b>		
Pneumatic C-axis	●	●
Pneumatic C-axis + Pneumatic AB-axis (1)	-	-
Pneumatic C-axis + Electric B-axis (1)	-	-
Pneumatic C-axis + Pneumatic AB-axis + Electric B-axis (1)	-	-
Electric C-axis + Electric AB-axis (1)	-	-
(1) With maximum load reduction [kg]		
<b>Gripping system Pneumatics</b>		
First vacuum circuit with release blows	●	●
First pressure circuit for mechanical gripper	●	●
Additional vacuum circuits with release blows	-	-
Additional pressure circuits for mechanical gripper	-	-
Kit 4 valves 5/2 monostable + 12 input on the wrist	-	-
Kit 4 valves 5/2 bistable + 12 input on the wrist	-	-
Kit 8 valves 5/2 monostable + 12 input on the wrist	-	-
<b>Electronics and Software</b>		
Euomap 67 interface	●	●
Ethernet interface	●	●
USB interface	●	●
Socket for digital signals on the wrist: 5 (Programmable Input/Output) + 2(Input)	●	●
Socket for user safety signals	●	●
Socket for conveyor belt signals: 1 (Input) + 2 (Output) + 1 (Relais Output)	●	●
Socket for digital signals: 4 (Input) + 3 (Output relay)	●	●
Vertical axis approaching sensor	●	●
Industry 4.0 kit (ethernet router + software)	○	○
Board kit I/O external 16I + 16O with 8mt cable	○	○
Electrical panel on board	-	-
Electrical cabinet on the ground	●	●
Ground cabinet air conditioning	○	○
IML ready with high-voltage cable (high-voltage wiring for IML predisposition)	-	-
PLC software integrated into the CNC	○	○
Off-line programming software	○	○

**Accessories****IMM connecting cable:**

For Euomap 67 interface, available lengths [m]: 10 (●) 12 (○) 14 (○)

For JIS interface, available lengths [m]: 10 (○)

**Electrowelded steel robot support base (●):**

Available heights [mm]: 300, 400, 500, 600

**Adapter counter plate (-):**

Euomap 18 hole pattern available: E11

NOTE: Custom supports and counter plate available on demand

**Additional ground base to horizontal axis support(○)****Basic remote control pushbutton panel (○)****EVO console cable winder (○)**

● Standard ○ Optional – Not available

**SPECIAL CONFIGURATION**

Portal application

